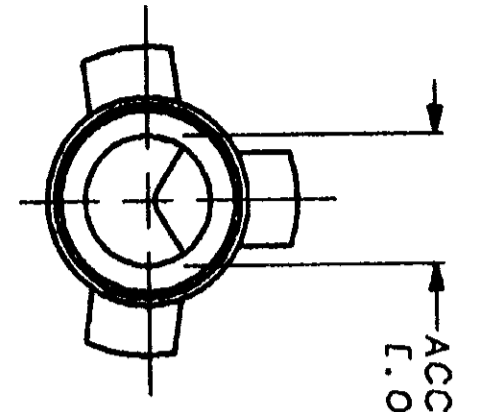
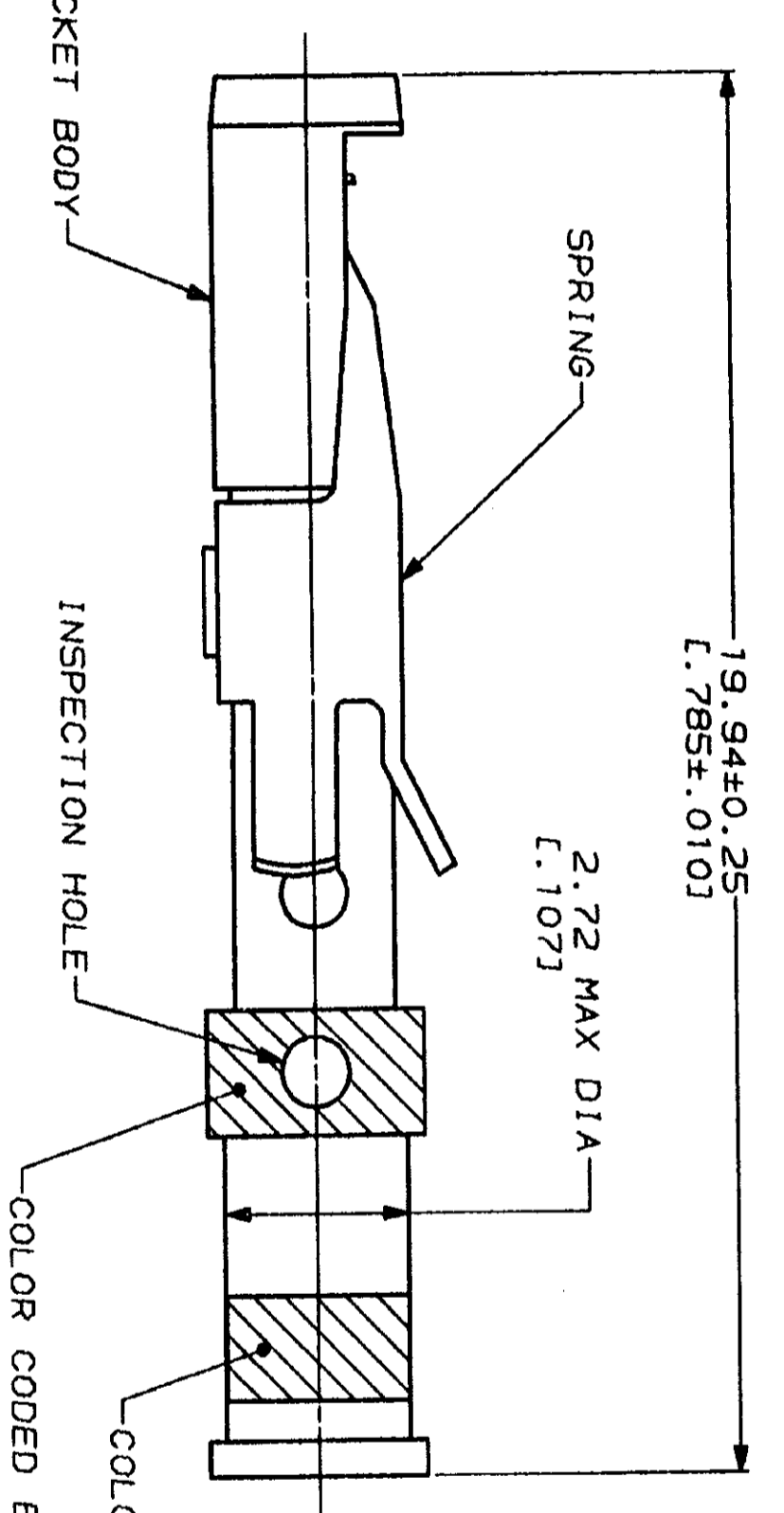


REV	DATE	DESCRIPTION
4	BD 39	ADDED -8 NPR 4580 AND REDRAWN ON CAD, 085 -4 EC 0020-344-93



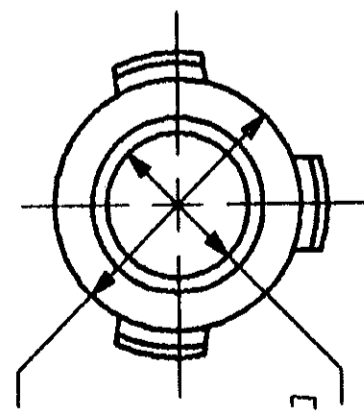
ACCEPTS 1.57±0.03  
L.062±.001J DIA PIN



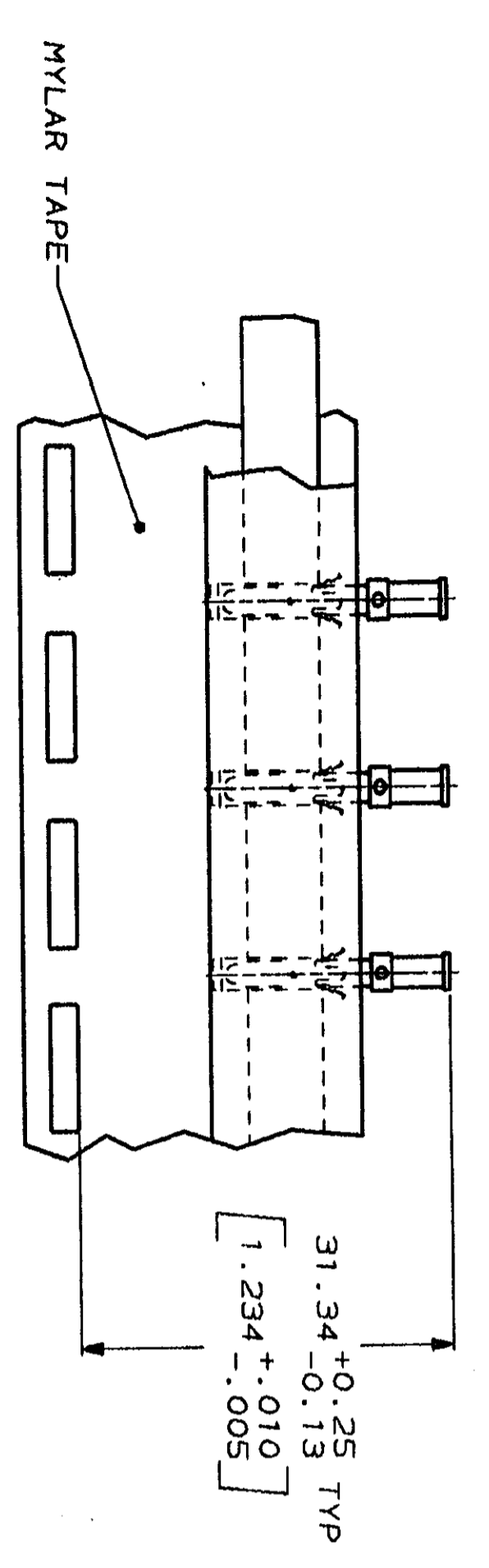
19.94±0.25  
L.785±.010J

2.72 MAX DIA  
L.107J

COLOR CODED VIOLET  
COLOR CODED BLUE



1.96±0.03 DIA  
L.077±.001J  
3.25 MAX DIA  
L.128J  
2 PLC



TAPE MTG DETAIL  
SCALE 2:1

- 1. 0.76µm [L.000030J] MIN GOLD OVER 1.27µm [L.000050J] MIN NICKEL.
  - 2. 1.27µm [L.000050J] MIN GOLD OVER 1.27µm [L.000050J] MIN NICKEL.
- WHEN ORDERING CONTACT ASSEMBLY ON TAPE, ORDER BY THE TAPE NUMBER PLUS THE PACKAGING CODE AS FOLLOWS:
- 1. FOR USE WITH AMP TAPETRONIC, PNEUMATIC TOOL-
    - A. 1000 PARTS TO A BOX ADD PACKAGING CODE: 1MBOX
  - 2. FOR USE WITH 4/8 INDENT STRIPPER CRIMPER-
    - A. 1000 PARTS TO A REEL ADD PACKAGING CODE: 1MREEL
    - B. 5000 PARTS TO A REEL ADD PACKAGING CODE: 5MREEL

DO NOT SCALE PRINT. UNLESS SPECIFIED DIMENSIONS IN mm [INCHES] TOLERANCES ON: 1. PLC DEC # - 2. PLC DEC # - 3. PLC DEC # - ANGLES - MATERIAL SOCKET BODY: COPPER ALLOY SPRING: STAINLESS STEEL FINISH SOCKET BODY: SEE TABLE	DR 04/06/93 D. GELTZ CHK 4-26-93 R. STONE APPD 4-29-93 R. S. KLIME APPD - PRODUCT SPEC APPLICATION SPEC WEIGHT -	SMALL PACK STANDARD TAPE MTG (SEE DETAIL) A STANDARD PACKAGING TYPE	SOCKET BODY FINISH PART NO
		201568-8 201568-4 201568-3 201568-1	

**AMP** AMP Incorporated  
Harrisburg, PA 17105-3608

CONTACT ASSEMBLY, SOCKET,  
#16, 14 AWG, TYPE II

SIZE CASE CODE DRAWING NO  
SCALE 10:1 00779 ©-201568

CUSTOMER DRAWING 1 OF 1